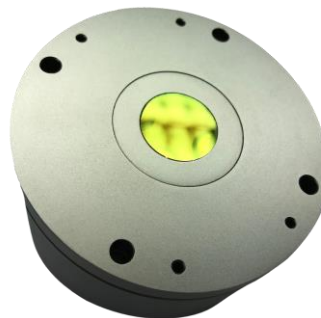


MIRS Product Range: MIRS8-A

Summary Information:

- Mid-infrared spectral sensor
- OEM products for Industry 4.0
- Integration into customer products/processes
- ATR Platform (Attenuated Total reflectance)
- 8 customised payload channels



Product Description:

The MIRS8-A ATR sensor is a rugged and robust industrial sensor that is designed for inline, in-situ sample measurements of industrial fluids that can't be measured by means of a transmission flow-cell. Typical applications analyse heterogenous or multi-phase fluids.

The MIRS8-A is a sensor platform and will be configured by Spectrolytic depending on the application and the customer's requirement. It has 8 configurable filter channels that analyse discrete pre-determined regions of spectral interest.

The sample is provided to the sensor via the front-mounted ATR crystal, whereby the device uses the concept of Attenuated Total Reflectance to record a spectrum of the fluid at the ATR/fluid interface.

The MIRS8-A can be configured to either transmit the raw sensor data or to provide fully calibrated data. In the latter case the data processing is carried out on the sensor unit itself using the embedded predictor.

The MIRS8-A uses an M12 connector for power and communication and the detailed pin configuration of this connector has been provided below.

Specification of the MIRS-A Sensor:

- Dimensions: Ø x H / 70 X 35 mm
- Weight: 700 g
- Housing material: Stainless steel/ Aluminium
- Communication interfaces: USB and Ethernet, or CanOpen
- Operating voltage: 12V
- Sample Temperature: <70°

| PIN | DETAIL |
|-----|-----------------|
| 1 | ETH_TX+/CAN_H+ |
| 2 | ETH_TX-/CAN_L |
| 3 | ETH_RX-/SER_RX |
| 4 | USB+ |
| 5 | USB - |
| 6 | ETH-RX-/SER_TX+ |
| 7 | 12V |
| 8 | Ground |