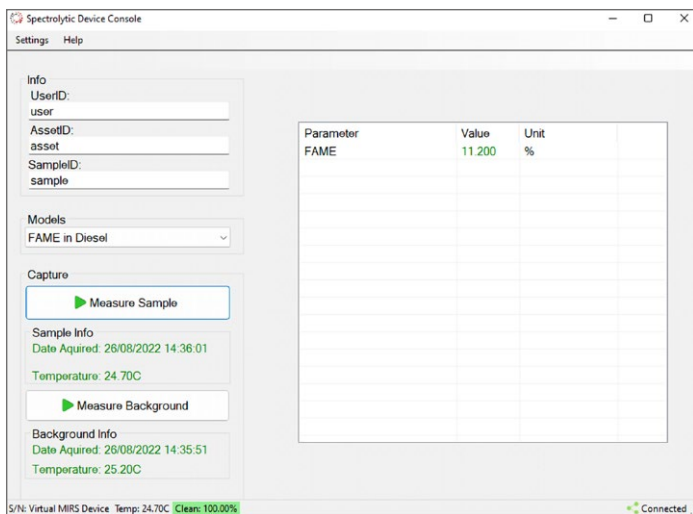


FluidInspectIR®

Portable FAME Analyser



How to use

The 2-3ml sample is dispensed into the inlet tubing of the flow-cell via a syringe. The flow-cell is placed into the analyser and the measurement is started from the software.

The software is an easy-to-use GUI ran from a Tablet / Laptop (windows 10).

Summary Information

- ▶ Correlates with ASTM D7371
- ▶ Calibrated with Certified Biodiesel Blends
- ▶ Detectable range of 0 to 100% FAME (B0-B100)
- ▶ Portable and battery operated
- ▶ 500 measurements without recharging

Application

The FluidInspectIR® - FAME uses transmission Spectroscopy, based on the ASTM D7371 standard, to extract the FAME % parameter from a biodiesel sample.

Specification

GUI: Software Console provided for running on windows 10 based laptop / tablet (tablet can be provided as option)

Ambient operating temperature and humidity range: 0-70C non -condensing

Power requirement: 230VAC for mains charging. 2500mAH LiPo battery in device

Internal battery capability typical runtime: 250 sample measurements between charge

Compliance: Correlates with ASTM D7371

Cuvettes: 1x Cuvettes (flow-cells)

Consumables: Syringes for dispense (5ml)

Sample volume: 2-3ml

Measurement range: B0-B100