



FluidInspectIR[®]
PORTABLE by Spectrolytic

FluidInspectIR^{??} Portable Ethanol in Gasoline Analyser



Summary Information

- Ethanol in Gasoline Analyser
- Correlates with ASTM D4815(GC)
- Detectable range of 0 to 20% Ethanol
- Portable and battery operated

Application

The FluidInspectIR[®] analyser measures the ethanol volumetric % concentration in gasoline samples with the same accuracy as conventional oil laboratories reports.

How to use

The 2-3ml of oil sample is dispensed into the inlet tubing of the flow-cell via a syringe. The flow-cell is placed into the analyser and the measurement is started from the software.

The software is an easy-to-use GUI ran from a Tablet / Laptop (windows 10).

Specification

GUI: Software Console provided for running on windows 10 based laptop / tablet (tablet can be provided as option)

Ambient operating temperature and humidity range: 0-70C non -condensing

Power requirement: 230VAC for mains charging. 2500mAH LiPo battery in device

Internal battery capability typical runtime: 250 sample measurements between charge

Compliance: Correlates with ASTM D4815(GC)

Cuvettes: 1x Cuvettes (flow-cells)

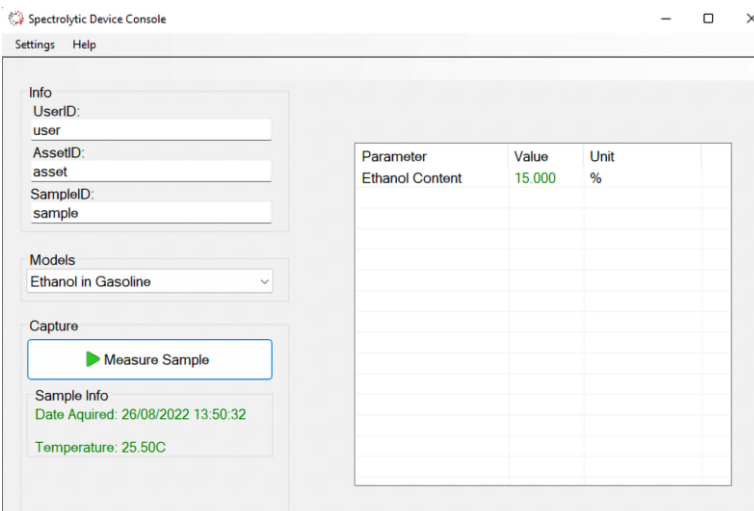
Consumables: Syringes for oil dispense (5ml)

Sample volume: 2-3ml

Repeatability: <+-2% of measured value

Accuracy: <+-2% of measured value

Measurement range: 0 to 20% v/v ethanol in gasoline.



Spectrolytic
Innovative Solutions in Spectroscopy

Spectrolytic
info@spectrolytic.com
www.spectrolytic.com

Whilst the Company takes every precaution in the preparation of its catalogues, technical circulars, price lists and its other literature, these documents are for the Buyer's general guidance only and the particulars contained therein shall not constitute representations by the Company and the Company shall not be bound thereby.